



# Linking State and Federal Policies to Protect Prairies, Pollinators, and Other Critters in the Pacific NW

Sam Baraso



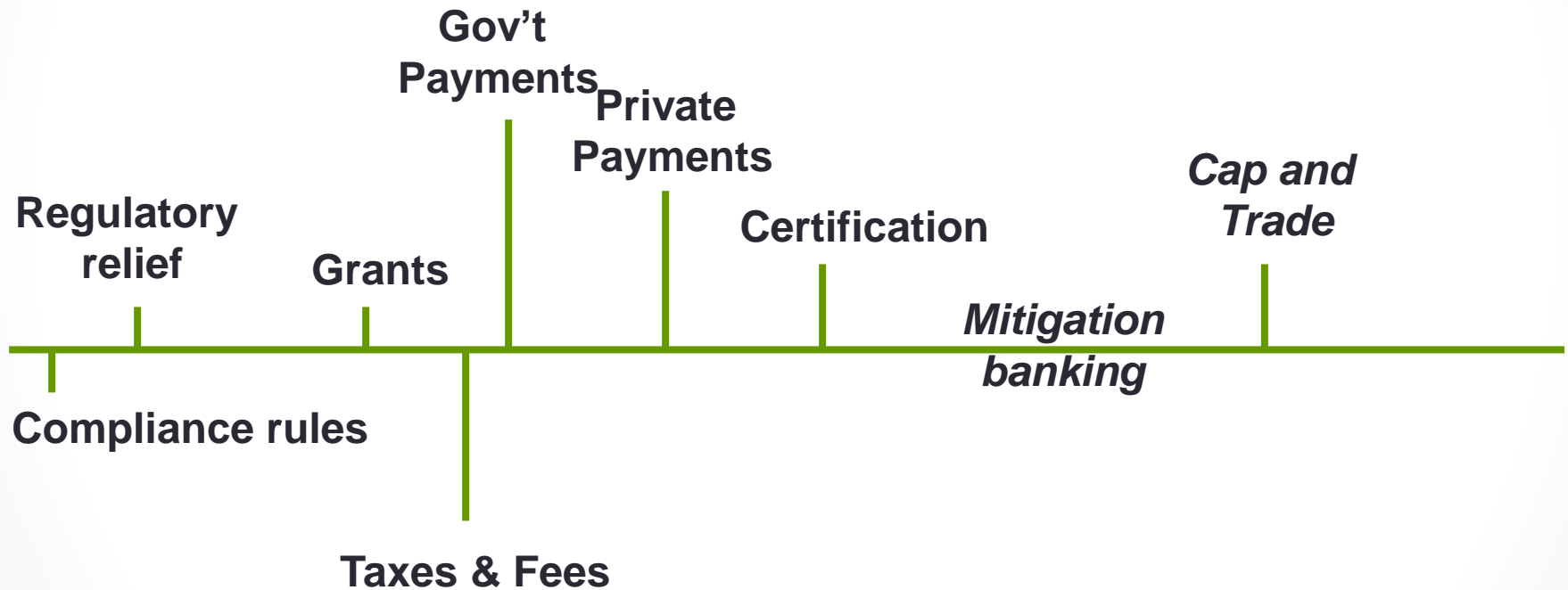
**WILLAMETTE PARTNERSHIP**

4640 SW Macadam Ave., Suite 50, Portland, OR 97239 | T: 503.946.8350 | F: 971.229.1968 | W: [www.willamettepartnership.org](http://www.willamettepartnership.org)

# Providing Ecosystem Services

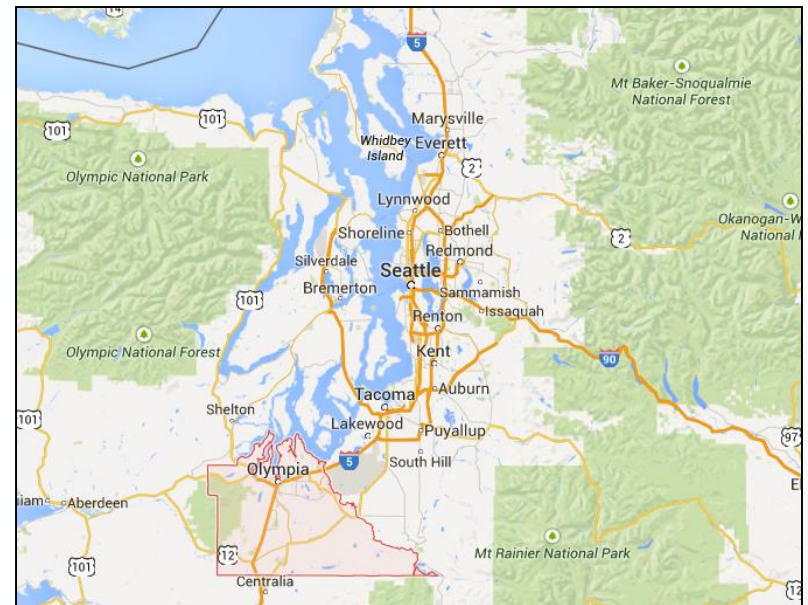
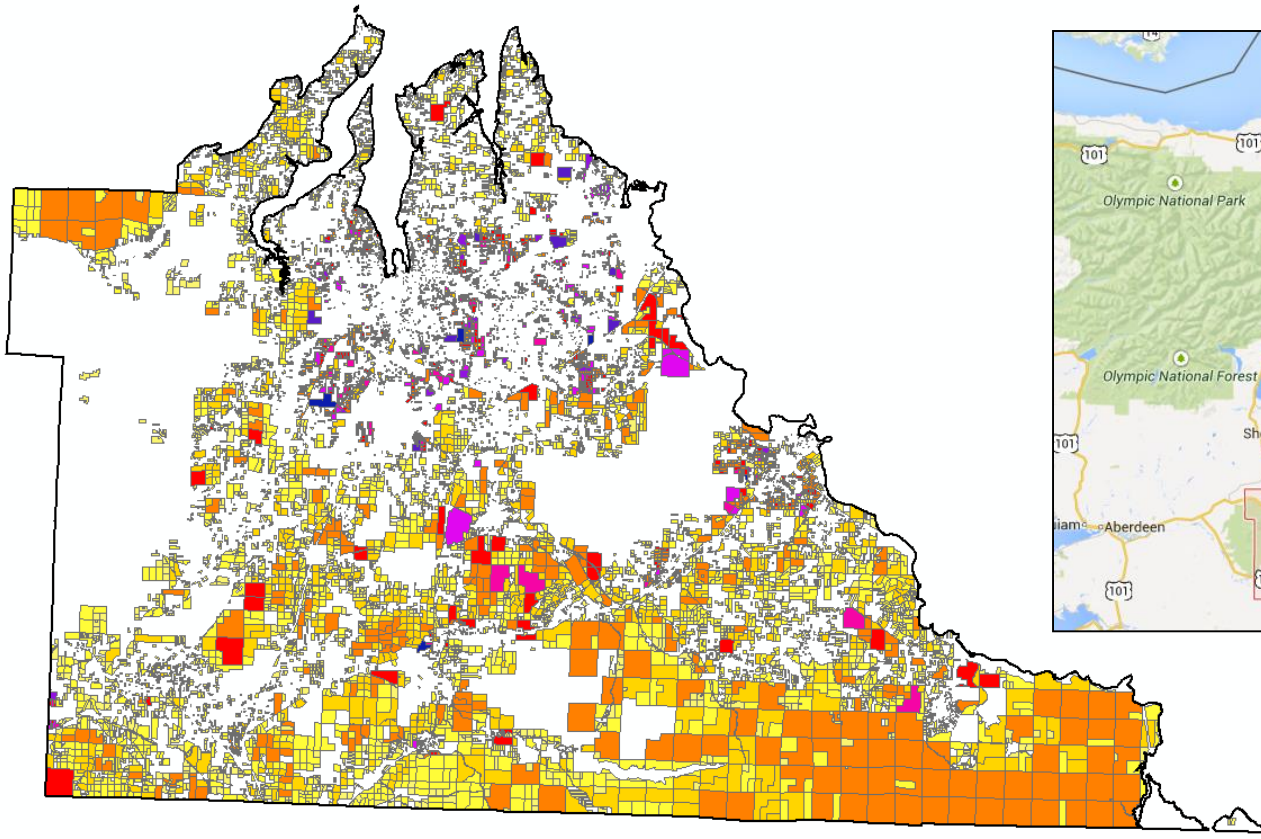
**Directive**

**Free Market**



# Thurston County Context

- 30 year Habitat Conservation Plan
- 8% of historic prairies remaining
- 60% increase in residential dwellings through 2045
- 60% increase in population through 2045





# Prairie Habitat Assessment Methodology

- Nine month model and protocol adaptation with Technical Working Group
- Testing on >20 scenarios
  - 6 remote sites
  - 6 field sites
  - Subsequent feedback and revisions

## Deliverables:

1. Protocol Development
2. Adapted Quantification Tool
3. Procedure Manual



# Prairie Habitat Assessment Methodology

Unit: Functional Acres

## Ecological Attributes

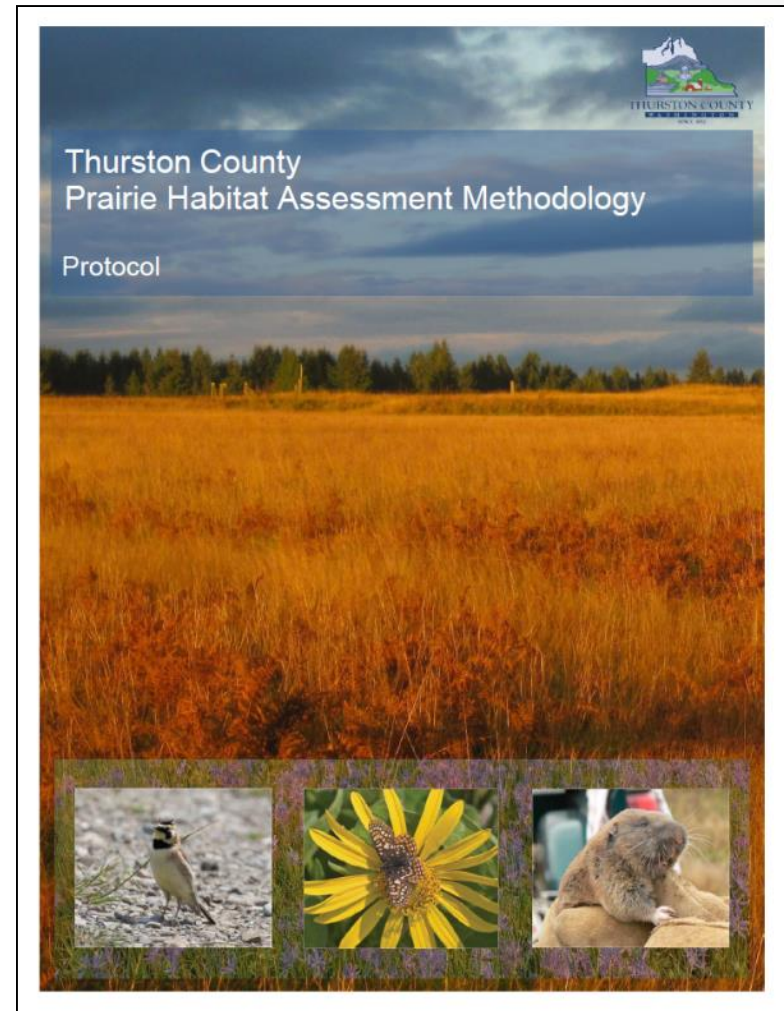
- Prairie habitat quality and extent

## Landscape Context

- Connectivity
- Adjacent land use and protection
- Proximity to reserve network sites

## Population

- Presence and abundance of species



# Conservation Strategy

- 3 covered habitats, 13 covered species
- Recovery-based conservation strategy
  - In-lieu fee mitigation
  - Working lands strategy
- Critical Areas Ordinance
  - Prairies
  - Oak Woodlands
  - Wetland habitat





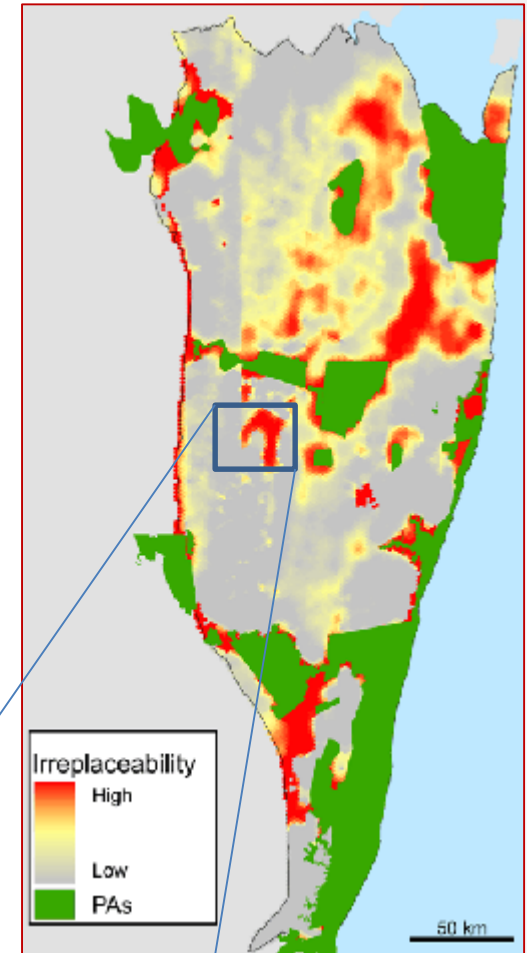
# In-Lieu Fee Mitigation



\$ / functional acre impact



/ functional  
acre benefit



# Business Factors

Environmental  
Assets

Buyers

Market  
Infrastructure

Regulators

Market    Operations

Sellers





# Business Factors

Environmental  
Assets

- Acquisition cost
- Initial Stewardship
- Long-term Stewardship
- Overhead
- Inflation
- Return on Investment

Buyers

Regulators

Public





# Challenges

- Building consensus around scientific methods and safety factors
- Making the financial case
- Developing implementation infrastructure
- Uncertainty in conservation targets
- Regulatory guidance



# Questions?

Sam Baraso

[baraso@willamettepartnership.org](mailto:baraso@willamettepartnership.org)



**WILLAMETTE PARTNERSHIP**